

Texas A&M University

PAINTING I, ARTS 305
MW 10:20 – 12:50 pm – Langford A 119
Spring 2016

Instructor: Felice House
Email: felicehouse@tamu.edu
Website: www.felicehouse.com
Phone: (979) 218-0151

Office: Langford A 134
Office Hours: Weds 9 -10 am or by appt.

Course Description and Prerequisites

Exploring potentials of painting media with emphasis on color and composition.

Prerequisite: ARTS 111, ENDS 115 or any drawing class or approval of instructor and undergraduate program coordinator.

Student Learning Outcomes / Objectives

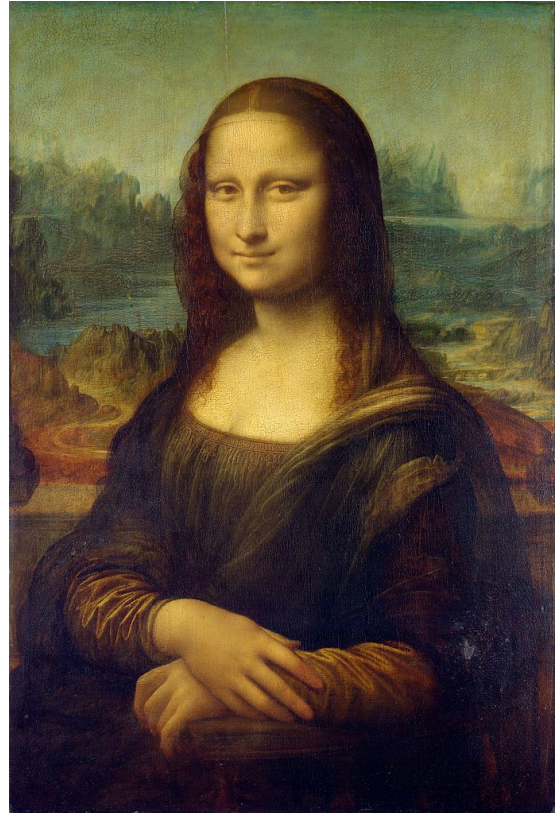
- Students will describe the different qualities of painting media.
- Students will recognize the best ways to use painting tools and equipment by observing demonstrations given by the instructor.
- Students will demonstrate understanding of the process of turning a sketch into a finished painting
- Students will demonstrate color theory by completing a series of exercises using primary, secondary and tertiary colors.
- Students will create an illusion of space by translating three-dimensional form into two- dimensions.
- Students will analyze how light defines form and translate that knowledge into a composition.
- Students will critique paintings using appropriate painting vocabulary and citing the principles and elements of design.
- Students will justify their use of color and composition during in-class critiques.

Attendance

This is a studio course. Attendance is mandatory. Punctuality is a symbol of professionalism and responsibility. Students will be painting every class period. The paintings created during class time will account for a large portion of their grade. Excused absences are covered by the University policy. In such cases you should speak with the instructors as soon as possible to arrange for make up work. No grace will be extended for unexcused absences, and significant penalties will result per the grading policies below. Any more than three unexcused absences will result in your grade being lowered one letter. More than five unexcused absences will result in a failing grade.

Assessment and Grade Evaluation

Projects will be graded throughout the semester. Grades will be posted on eCampus. We will hang student work in undergraduate Visualization show at the end of the semester. For this reason, make sure to keep all of your work from the semester.



Grading

90% = Painting assignments

10% = Class participation (attendance, classroom attitude, effort during class time, engaged and present during critiques, arrives prepared and on time, is self motivated)

A = Excellent (100 - 90)

B = Very Good – Good+ (89 - 80)

C = Good – Acceptable (79 - 70)

D = Below Average (69 - 60)

F = Unacceptable (59 - 0)

Grading Criteria for In-Class drawings and Projects:

Each project will be turned in for grading. Factors included in evaluation are:

- Visual impact and expressiveness
- Composition
- Use of tools and techniques
- Use of drawing, perspective, value, color, and paint
- Manipulation of paint to create a convincing illusion of form and space
- Performance in class: attendance, punctuality, attentiveness, attitude
- Receptiveness to feedback, individual improvement, productivity, timely completion

Helpful Links

Academic Calendar: <http://registrar.tamu.edu//General/Calendar.aspx>

Final Exam Schedule: <http://registrar.tamu.edu/General/FinalSchedule.aspx>

On-Line Catalog: <http://catalog.tamu.edu/>

Student Rules: <http://student-rules.tamu.edu/>

Religious Observances: <http://dof.tamu.edu/node/75>

Americans with Disabilities Act (ADA)

The Americans with Disabilities Act (ADA) is a federal anti-discrimination statute that provides comprehensive civil rights protection for persons with disabilities. Among other things, this legislation requires that all students with disabilities be guaranteed a learning environment that provides for reasonable accommodation of their disabilities. If you believe you have a disability requiring an accommodation, please contact Disability Services, currently located in the Disability Services building at the Student Services at White Creek complex on west campus or call 979-845-1637. For additional information, visit <http://disability.tamu.edu>.

DEFACEMENT OF PUBLIC PROPERTY

"It is unlawful for any person to damage or deface any of the buildings, statues, monuments, trees, shrubs, grasses, or flowers on the grounds of any state institutions of higher education (Texas Education Code Section 51.204)" The words damage or deface refer specifically to any and all actions, whether direct or indirect, that either diminish the value or mar the appearance of the physical environment.

Academic Integrity

For additional information please visit: <http://aggiehonor.tamu.edu> "An Aggie does not lie, cheat, or steal, or tolerate those who do."

SUPPLIES (underlined items are needed for the first week):

Surfaces:

- Tackle box or a large Tupperware to store paints, brushes, etc.
- 2 pieces of acrylic paper, at least 11x17" in size OR pre-primed paper/board OR paper that you prime yourself with house paint (look for words like primed or gessoed when purchasing)
- Strathmore Acrylic Paper 12" x 18"
<http://www.strathmoreartist.com/paint-acrylic/400-series-acrylic.html>
- Stretched Canvas: a variety of sizes, as needed during the semester
(Optional: prime canvas with house paint for a slicker surface)
- Apron or smock - to save all your clothes
- Paper towels and cotton rags!!! Old cotton t-shirts work well ☺
- (Optional): One gallon of white satin exterior house paint (Hardware store) – this can be shared with 3 or 4 people per semester
- (Optional): One 2"-3" house painting brush to use as a gesso brush (Hardware store)

Acrylic Supplies:

- Disposable palette pad at least 11"x14" OR a 16x20 piece of glass with duct tape around the edges (Acme Glass will cut this for you)
- Paper towels and cotton rags!!! Old cotton t-shirts work well ☺
- Brushes - #2, #4, #6, #8 Filbert (Princeton synthetic, Robert Simmons synthetics, Silver Brush Synthetic Brushes, other synthetic filberts)
- Set of small craft brushes (can be found at hobby lobby or michaels, comes in packs of 6-8 brushes)
- Spray water bottle - small
- Palette knife –metal for oil, plastic is fine for acrylic
- Blue Painters Tape

Acrylic Paint:

GOLDEN brand is a very good acrylic paint. I would highly recommend that you buy GOLDEN. It is available at Texas Art Supply in Houston, Jerry's Art O'rama in Austin, Michaels in College Station and online. Winsor and Newton brand is OK. The Basics brand available at Hobby Lobby is more transparent and therefore harder to paint with. Do not get craft paint or tempera paint.

Primaries (must have the first week):

- White (large tube)
- Black (good for tinting and mixing green)
- Yellow - Cadmium Yellow Light/Lemon Yellow/Primary Yellow
- Red - Cadmium Red Light

- Cool Blue - Ultramarine Blue/ Cobalt Blue Deep

Supplemental (helpful a few weeks into the semester):

- Dark Red - Alizarin Crimson
- Warm Blue - Pthalo Blue or Cerulean Blue
- Violet
- Brown - Burnt Umber

Oil Supplies:

- Nitrile Gloves (available at the hardware store)
- Liquin (Winsor & Newton, smallest size should be enough)
- Gamsol odorless turpentine (1 quart)
- Palette knife – metal for oil paint
- Palette – (options that work: a 16x20 piece of glass with duct tape around the edges, a wooden board that has been coated with polyurethane to seal it, a large disposable palette pad, wax paper and a board to tape it to.)
- Palette scraper if you are using a glass palette
- Palette cup
- Ceramic tile (for paint storage)
- Tupperware that will hold the ceramic tile
- Glass jar with lid – peanut butter/salsa jar – must have a wide mouth
- Oil Brushes - #2, #4, #6, #8, Robert Simmons Natural Bristle Filberts

Oil Paint:

Winsor and Newton Artist Grade Paint – student grade paint has filler included and therefore does not cover adequately.

- Titanium white, large tube
- Lemon yellow
- Yellow Ochre
- Cadmium red medium – or equivalent
- Alizarin Crimson
- Ultramarine Blue
- Cerulean Blue or Pthalo Blue
- Burnt Umber
- Black

Supplies can be bought at Hobby Lobby and Michaels in College Station or ordered online from:

<http://www.utrechtart.com/>
<http://www.jerrysartarama.com/>
<http://www.dickblick.com/>
<http://texasart.com/>